

Supplementary Materials

Supplementary Table S1 Spot blotch severity and resistance loci present in selections from the cross ‘Yangmai#6’ × ‘Mon/Ald’ and the effect of the loci on the AUDPC

Line No.	Alleles							AUDPC		Mean effect
	2Ay	2B	2D	5B	6D	7B	7D	F4	F5	
Yangmai#6	+	+		+	+			-	-	332.50
Mon/Ald		+	+			+	+	-	-	229.85
1	+		+		+	+	+	220	225	
2	+	+	+	+	+			160	180	
58		+	+	+		+	+	180	195	
10	+	+			+	+	+	160	195	214.58
42		+		+	+		+	220	255	
21	+	+	+		+			300	285	
14		+			+			480	495	
45					+		+	510	480	472.50
75		+			+		+	420	450	

Bold and italic lines showed minimum number of alleles

Supplementary Table S2 Spot blotch severity and resistance loci present in selections from the cross ‘Yangmai#6’ × ‘Chirya#3’ and the effect of the loci on the AUDPC

Line No.	Alleles								AUDPC		Mean effect
	2Ay	2B	2D	3B	5B	6D	7B	7D	F4	F5	
Yangmai#6	+	+			+	+			-	-	332.50
Chirya#3		+	+	+			+	+	-	-	277.10
98	+	+	+	+	+	+		+	165	255	}
16	+	+	+	+	+		+	+	165	155	
21	+	+	+		+	+	+	+	145	160	
11	+	+	+	+		+		+	200	195	
96	+	+	+		+	+		+	145	125	
73		+	+		+	+	+	+	200	200	
63		+		+	+	+	+	+	145	150	
1			+	+	+	+	+	+	170	125	
39		+	+			+	+	+	145	160	
41		+	+			+	+	+	200	145	
8		+	+		+		+		220	140	}
28			+	+		+	+		235	160	
36		+	+			+	+		185	285	
52		+			+	+	+		235	180	
108					+	+		+	240	255	

Bold and italic lines showed minimum number of alleles

Supplementary Table S3 Spot blotch severity and resistance loci present in in selections from the cross ‘Yangmai#6’ × ‘Tia#1’ and the effect of the loci on the AUDPC

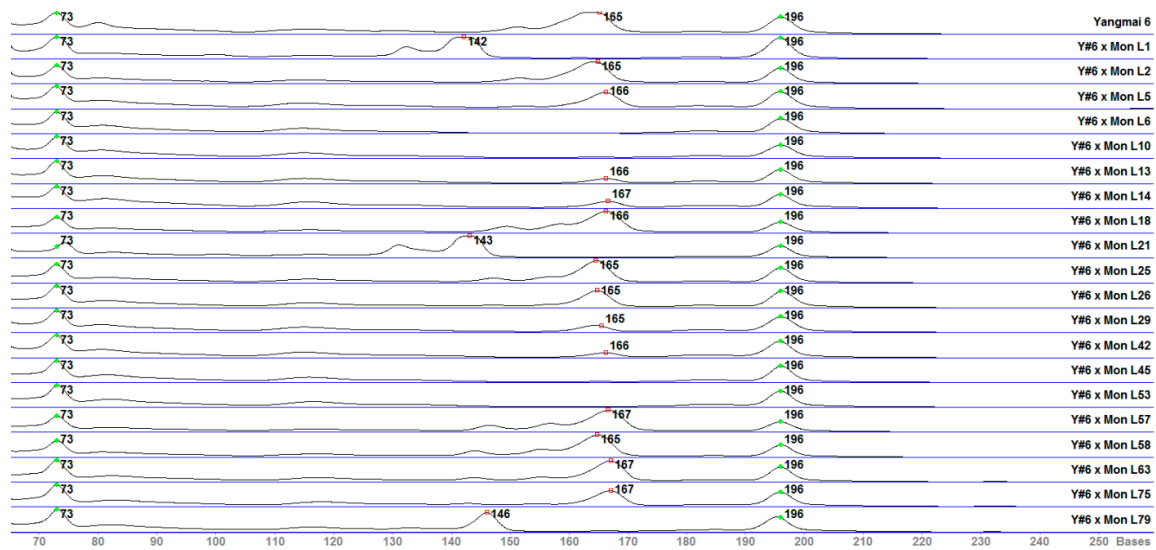
Line No.	Alleles							AUDPC		Mean effect
	2Ay	2B	2D	5B	6D	7B	7D	F4	F5	
Yangmai#6	+	+		+	+			-	-	332.50
Tia#1		+	+		+	+	+	-	-	345.00
56	+	+	+	+	+	+	+	120	150	
52	+	+	+	+	+		+	120	120	
18	+	+	+		+	+	+	120	225	
9	+	+		+	+	+	+	150	105	163.21
29		+	+		+	+	+	200	195	
17	+	+			+	+	+	150	120	
65		+	+		+	+		210	300	
5	+	+					+	240	225	
36		+		+	+			240	210	230.00
63		+	+	+				210	255	

Bold and italic lines showed minimum number of alleles

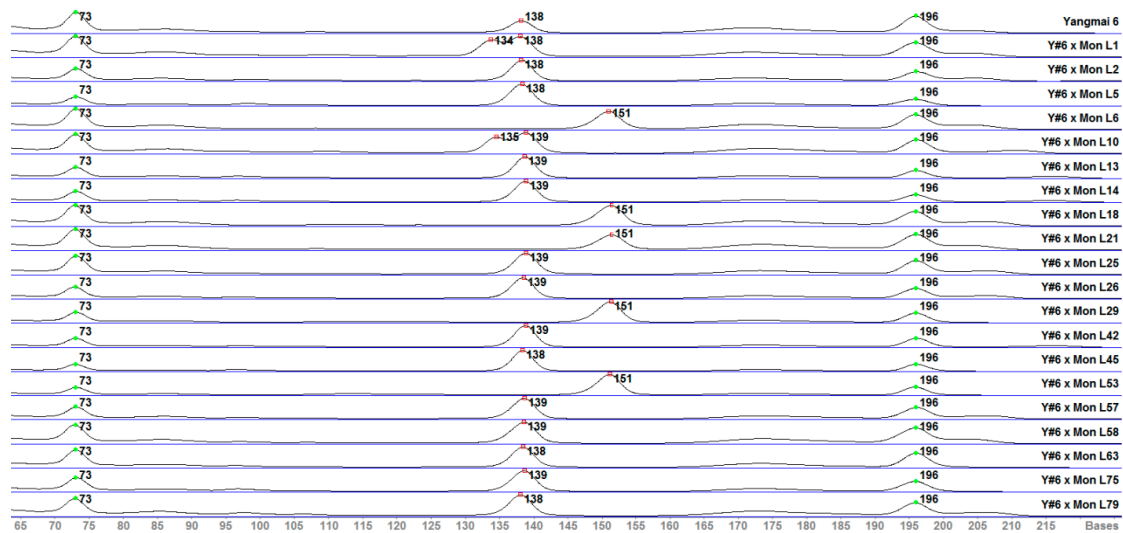
Supplementary Table S4 Spot blotch severity and resistance loci present in in selections from the cross ‘Yangmai#6’ × ‘Ning#8201’ and the effect of the loci on the AUDPC

Line No.	Alleles						AUDPC		Mean effect
	2An	2Ay	2B	5B	6D	7D	F4	F5	
Yangmai#6		+	+	+	+		-	-	332.50
Ning#8201	+		+	+		+	-	-	271.65
6	+	+	+	+	+	+	120	105	
26	+	+	+	+	+	+	160	105	
1	+	+		+	+	+	90	110	
10	+	+	+	+		+	200	150	
18		+	+		+	+	120	165	154.72
22	+		+	+	+	+	120	210	
30	+		+	+	+	+	120	270	
35	+	+		+	+	+	240	180	
36	+	+		+	+	+	200	120	
14			+		+	+	280	240	
33	+			+	+		240	255	275.83
62	+				+		360	280	

*2An=The allele derived from the parent Ning#8201; 2Ay= The allele derived from the parent Yangmai#6; Bold and italic lines showed minimum number of alleles

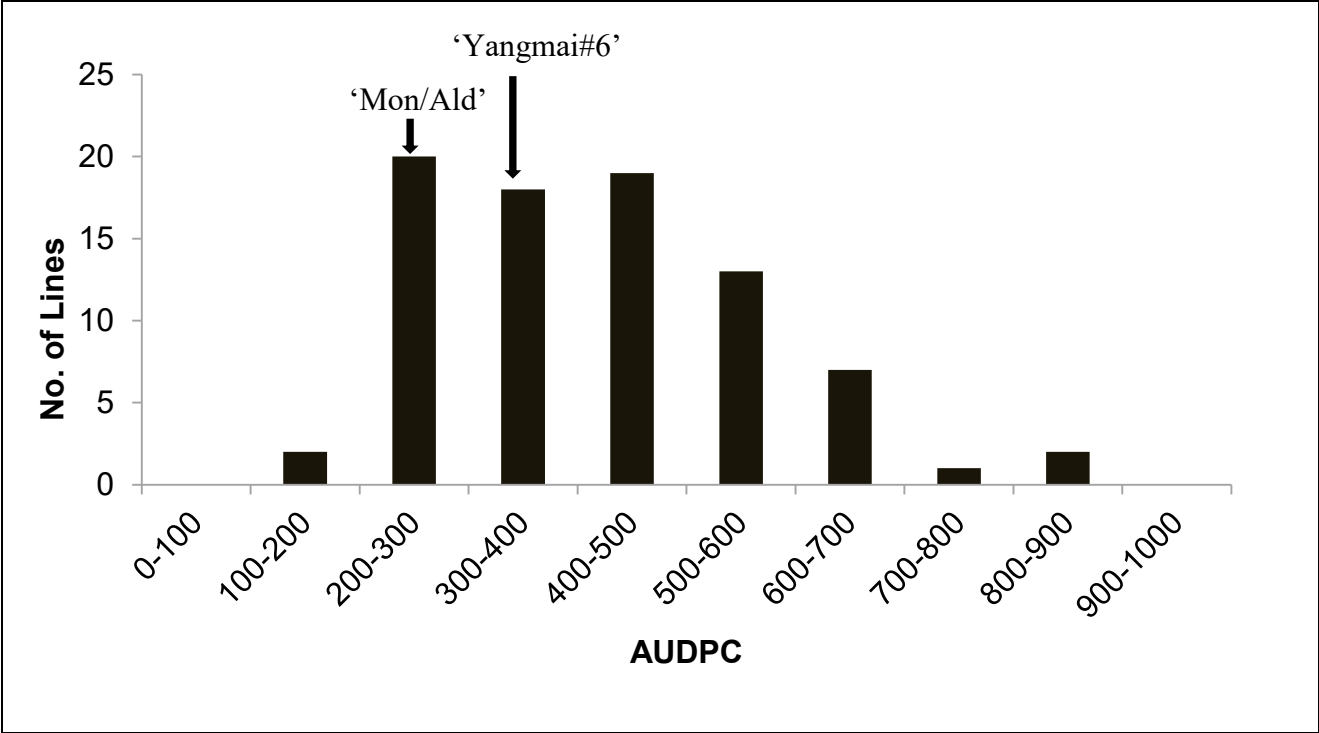


a

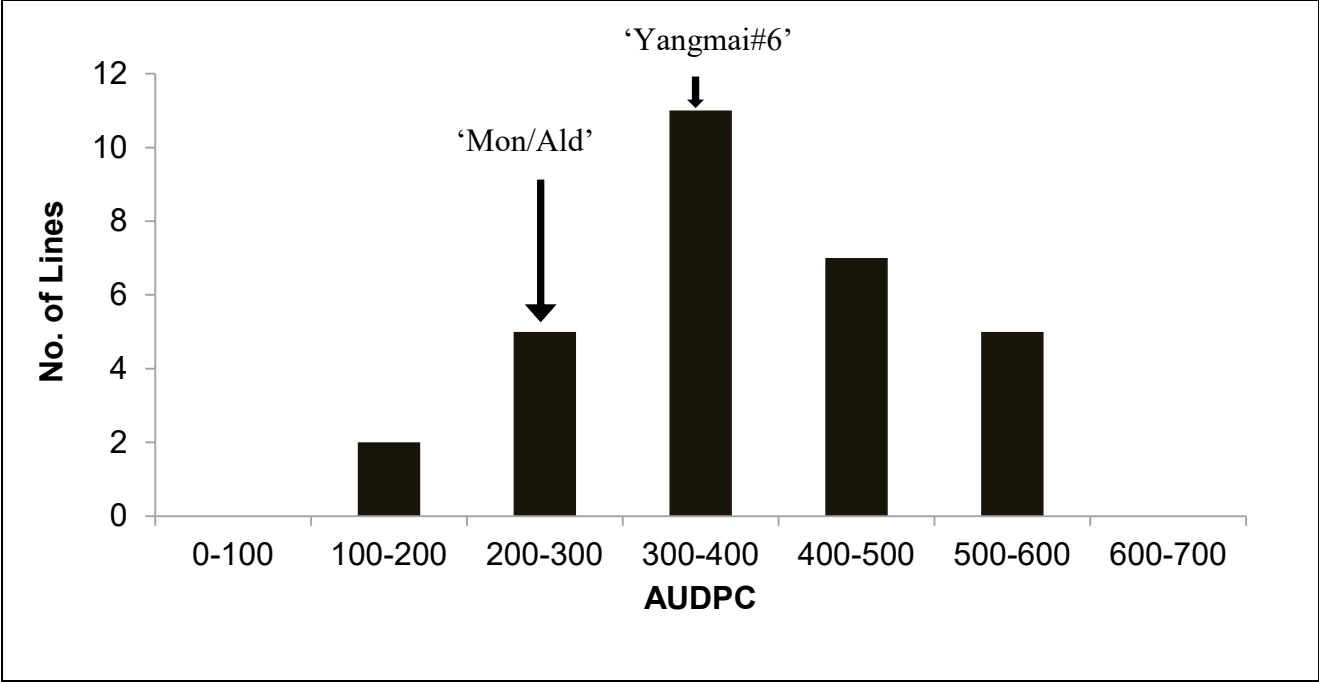


b

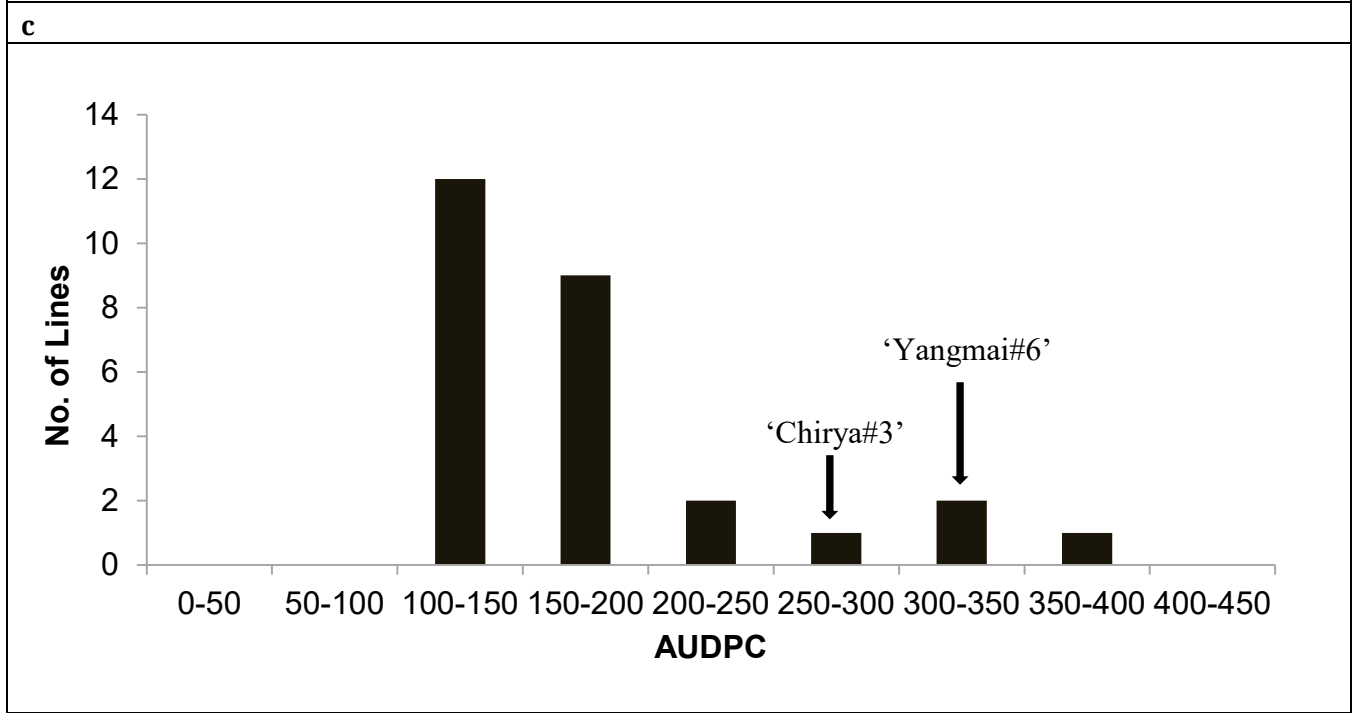
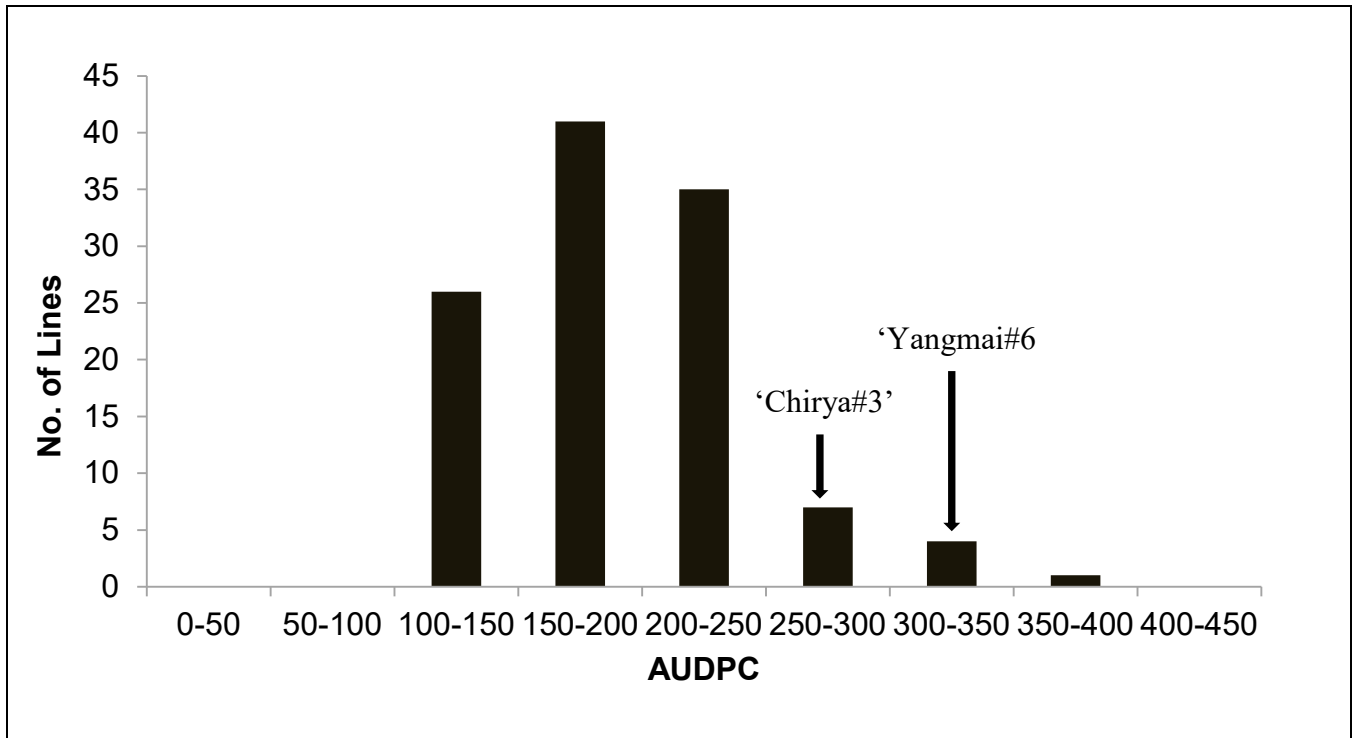
Supplementary Figure S1 Traces used for SSR fragment detection in the ‘Yangmai#6’ × ‘Mon/Ald’ population. (a) *Xgwm148* (chromosome 2B), (b) *Xgwm111* (chromosome 7D).

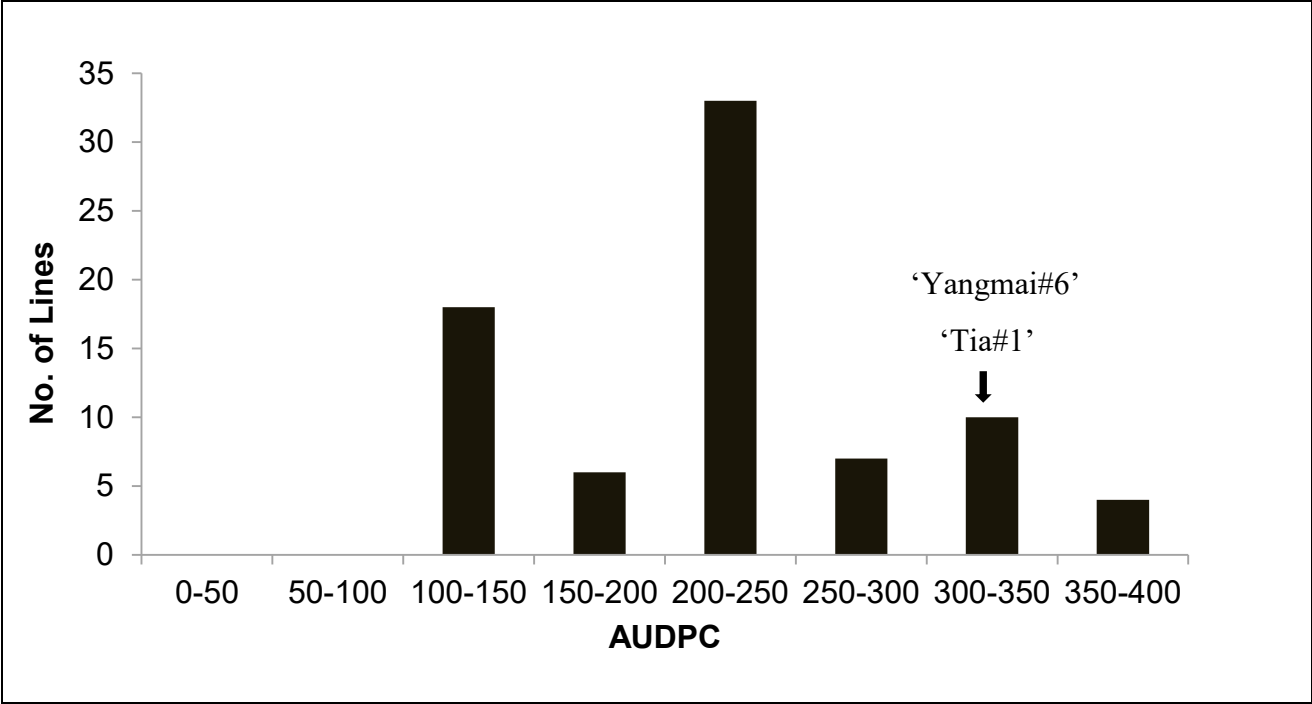


a

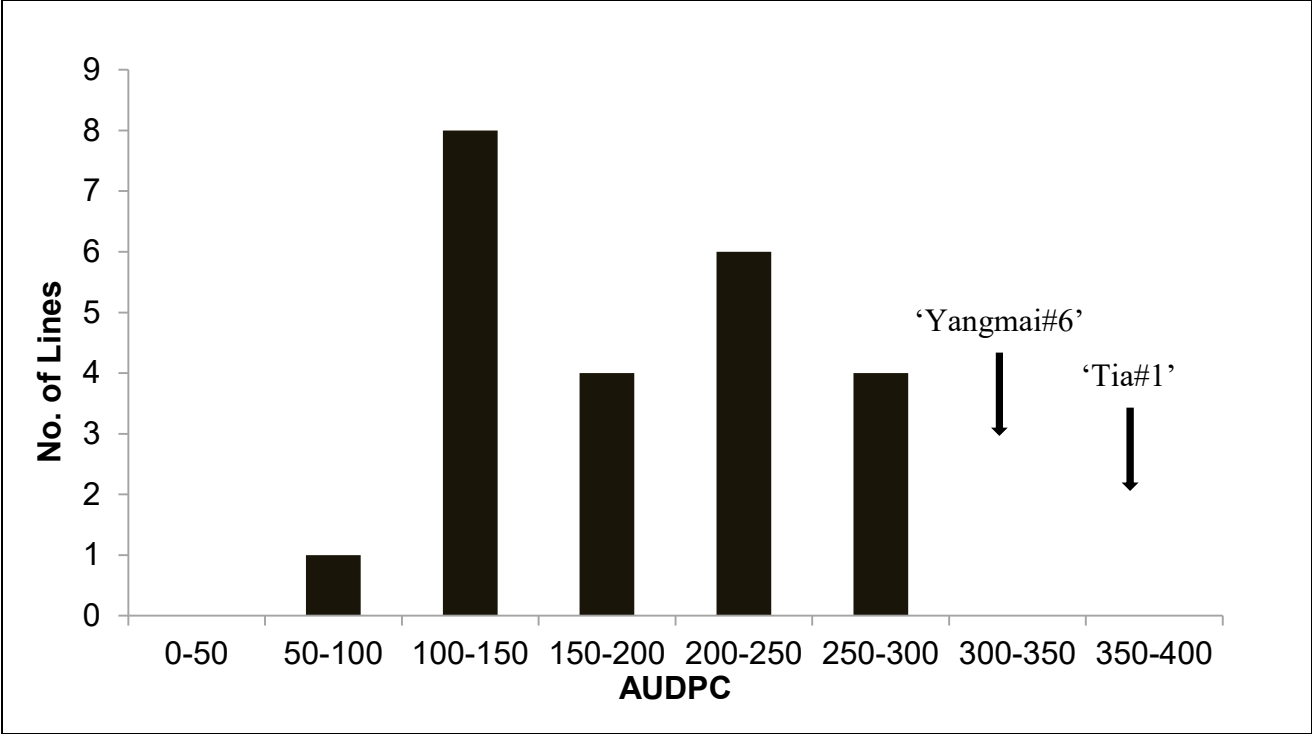


b

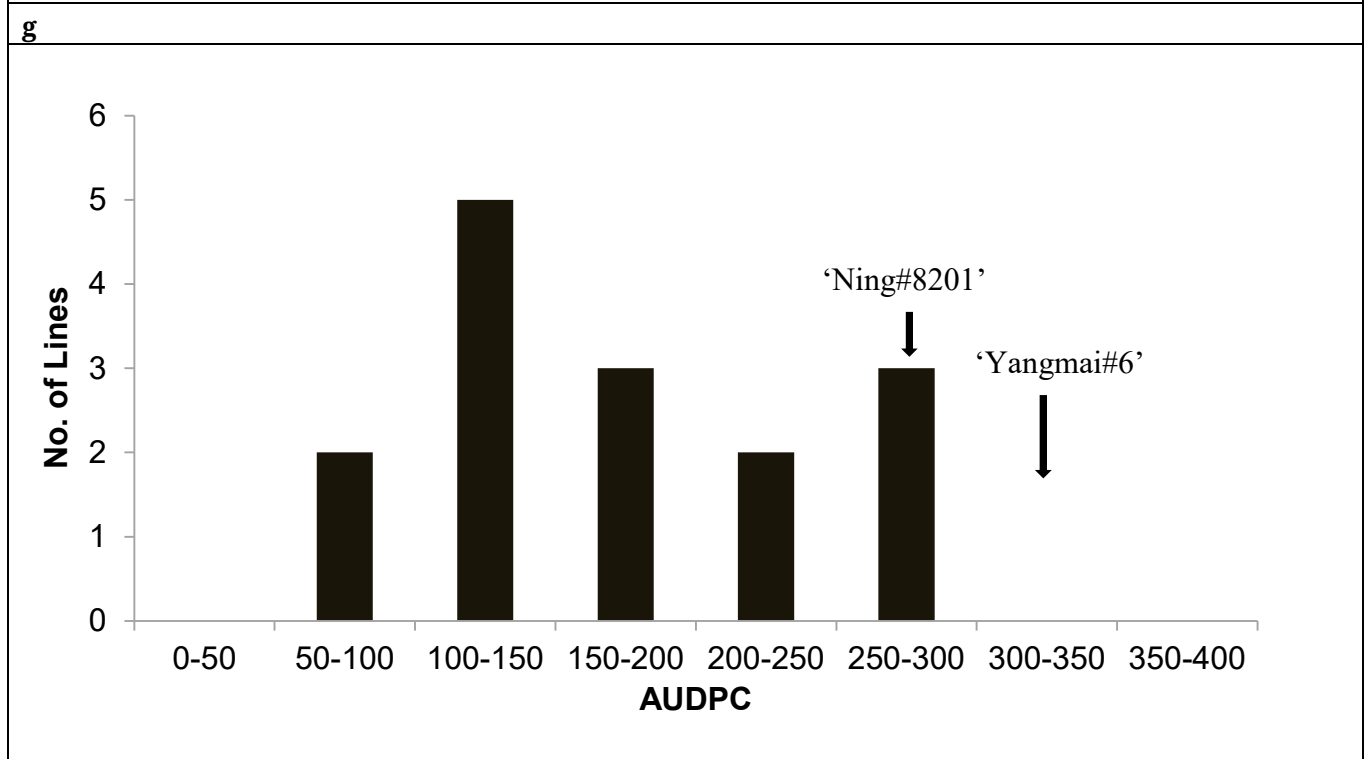
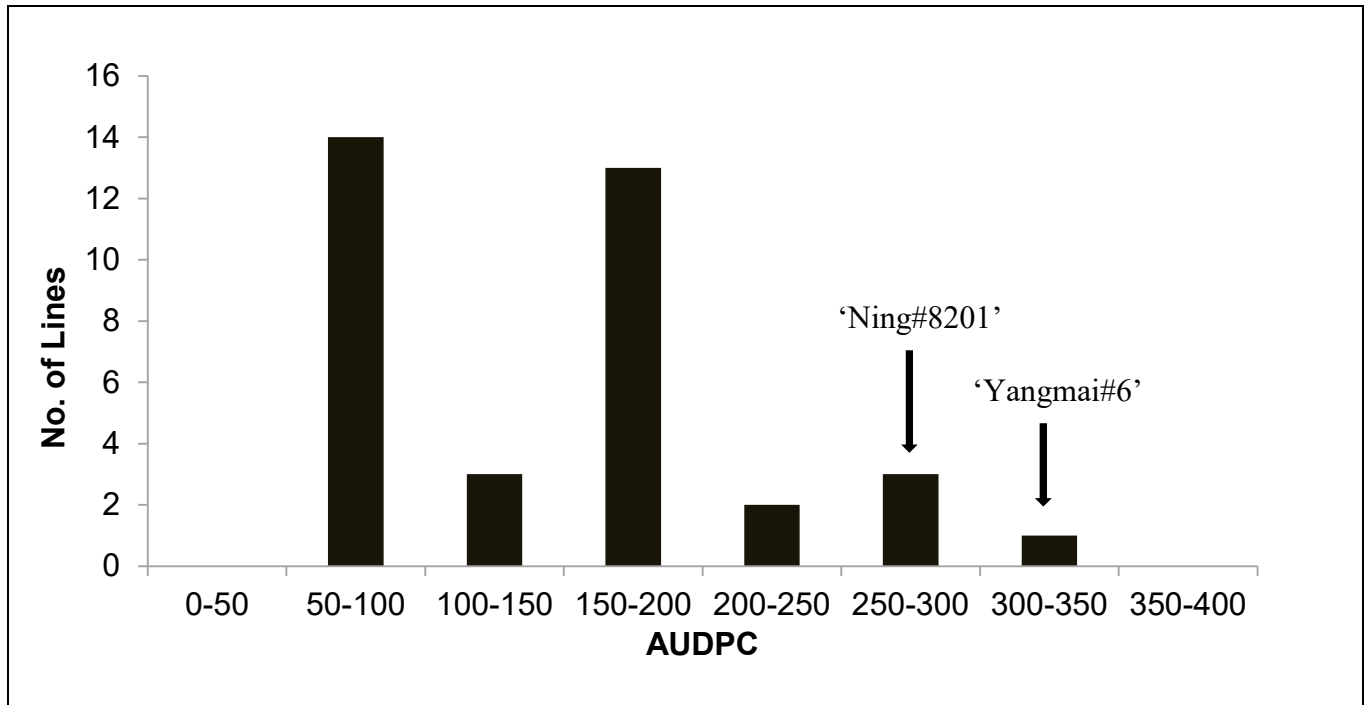




e



f



h

Supplementary Figure S2 Distribution of AUDPC among selections made from the crosses (a, b) 'Yangmai#6' × 'Mon/Ald', (c, d) 'Yangmai#6' × 'Chirya#3', (e, f) 'Yangmai#6' × 'Tia#1', (g, h) 'Yangmai#6' × 'Ning#8201'. (a, c, e, g) F₄ lines, (b, d, f, h) F₅ lines.